



SRY Polyclonal Antibody

Catalog No	YP-Ab-02048
Isotype	IgG
Reactivity	Human;Rat;Mouse;
Applications	WB;IHC;IF;ELISA
Gene Name	SRY
Protein Name	Sex-determining region Y protein
Immunogen	The antiserum was produced against synthesized peptide derived from human SRY. AA range:51-100
Specificity	SRY Polyclonal Antibody detects endogenous levels of SRY protein.
Formulation	Liquid in PBS containing 50% glycerol, 0.5% BSA and 0.02% sodium azide.
Source	Polyclonal, Rabbit,IgG
Purification	The antibody was affinity-purified from rabbit antiserum by affinity-chromatography using epitope-specific immunogen.
Dilution	WB: 1/500 - 1/2000. IHC: 1/100 - 1/300. ELISA: 1/20000.. IF 1:50-200
Concentration	1 mg/ml
Purity	≥90%
Storage Stability	-20°C/1 year
Synonyms	SRY; TDF; Sex-determining region Y protein; Testis-determining factor
Observed Band	37kD
Cell Pathway	Nucleus speckle . Cytoplasm . Nucleus . Acetylation contributes to its nuclear localization and deacetylation by HDAC3 induces a cytoplasmic delocalization (PubMed:15297880). Colocalizes with SOX6 in speckles (PubMed:11818535). Colocalizes with CAML in the nucleus (PubMed:15746192). Colocalizes in the nucleus with ZNF208 isoform KRAB-O and tyrosine hydroxylase (TH) (By similarity). Nuclear import is facilitated by XPO4, a protein that usually acts as a nuclear export signal receptor (PubMed:19349578). .
Tissue Specificity	Blood,Sperm,
Function	disease:Defects in SRY are a cause of gonadal dysgenesis XY female type (GDXY) [MIM:306100]; also known as 'XY females' or Swyer syndrome. Patients are found to have a 46,XY karyotype. They suffer rapid and early degeneration of their gonads, which are present in the adult as 'streak gonads', consisting mainly of fibrous tissue and variable amounts of ovarian stroma. As a result these patients do not develop secondary sexual characteristics at puberty. The external genitalia in these subjects are completely female, and Muellerian structures are normal. In contrast, subjects with 46,XY partial gonadal dysgenesis have ambiguous genitalia, a mix of Muellerian and Wolffian structures, and dysgenic gonads.,disease:Defects in SRY are a cause of true hermaphroditism

[MIM:235600]. A true hermaphrodite must have both mature ovarian and mature testicular tissue with histologic evidence of follicle

Background

This intronless gene encodes a transcription factor that is a member of the high mobility group (HMG)-box family of DNA-binding proteins. This protein is the testis-determining factor (TDF), which initiates male sex determination. Mutations in this gene give rise to XY females with gonadal dysgenesis (Swyer syndrome); translocation of part of the Y chromosome containing this gene to the X chromosome causes XX male syndrome. [provided by RefSeq, Jul 2008],

matters needing attention

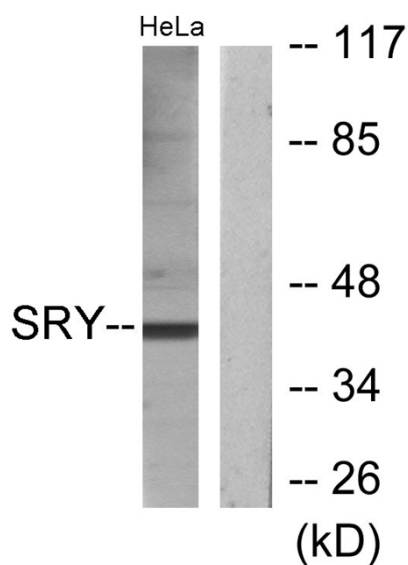
Avoid repeated freezing and thawing!

Usage suggestions

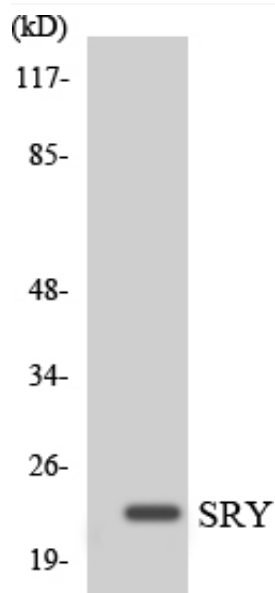
This product can be used in immunological reaction related experiments. For more information, please consult technical personnel.



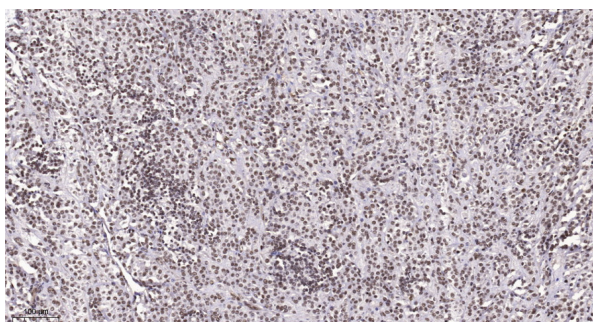
Products Images



Western blot analysis of lysates from HeLa cells, using SRY Antibody. The lane on the right is blocked with the synthesized peptide.



Western blot analysis of the lysates from K562 cells using SRY antibody.



Immunohistochemical analysis of paraffin-embedded human Small intestinal stromal tumor. 1, Tris-EDTA, pH9.0 was used for antigen retrieval. 2 Antibody was diluted at 1:200(4° overnight. 3, Secondary antibody was diluted at 1:200(room temperature, 45min).